

The Policy Disconnect in Agriculture and Health: A Case Study of South Africa

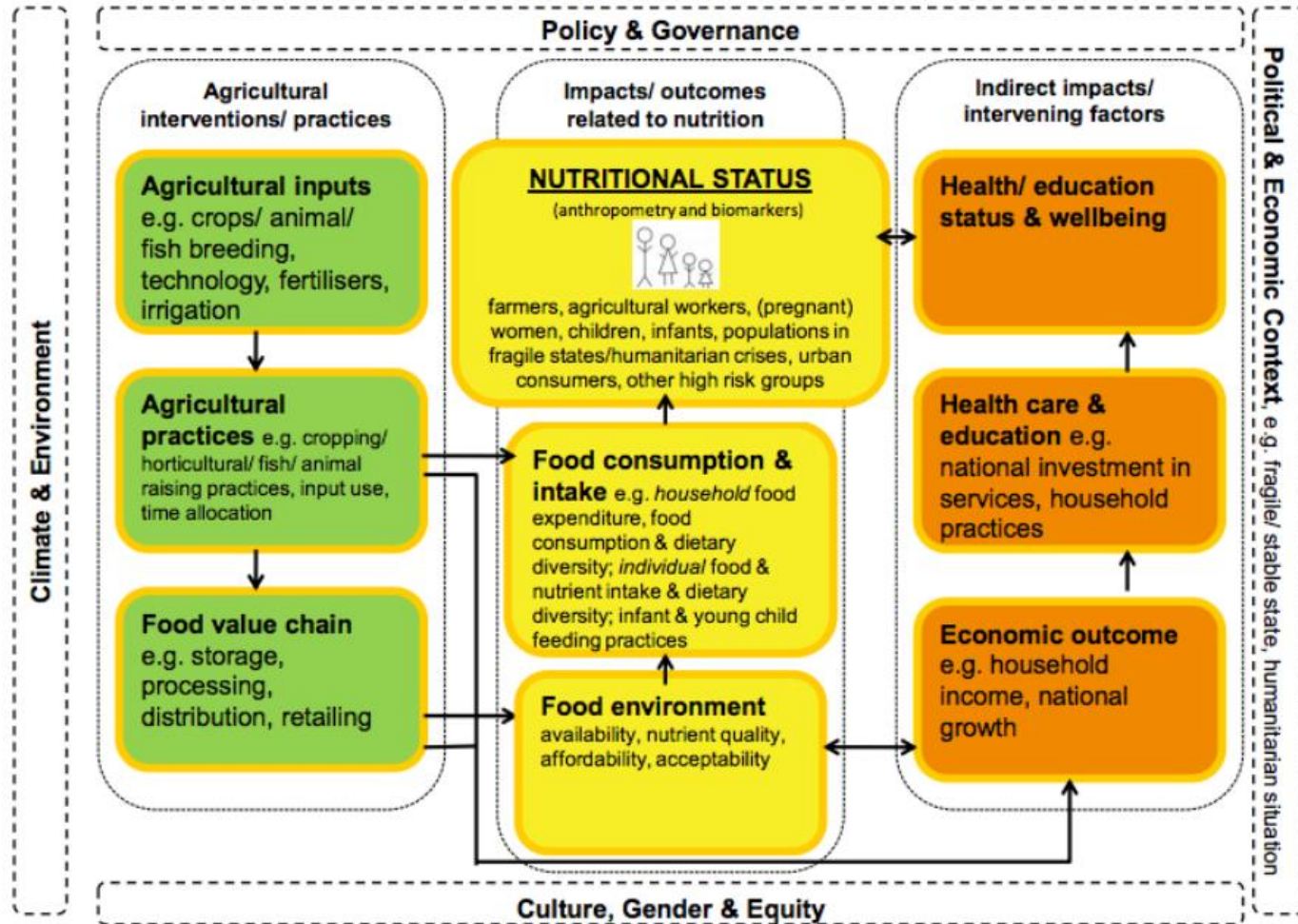
Elizabeth Hull

Department of Anthropology and Sociology, SOAS
Leverhulme Centre for Integrative Research on Agriculture and Health
e.hull@soas.ac.uk

5th Annual LCIRAH conference, 3-4 June 2015
Agri-Health Research: What have we learned and where to next?



Research chain for agriculture and nutrition





Agricultural
Policies

Policies
targeting
nutrition







Agricultural
Policies

Policies
targeting
nutrition

Agricultural interventions to improve food security and nutrition

- **Zero Hunger Programme** (2009) – *to integrate initiatives to help subsistence production (including One Home, One Garden programme)*
- **Agroecology Delivery Model**, Durban (2009)
- **National School Nutrition Programme** – *provides meals to over 9 million children daily*
- **National Food Relief Programme** – *distributes food boxes to the most vulnerable*

Non-agricultural policy targeting food security

- **Social assistance programme** - *including: child support grant; foster-child grant; care-dependency grant; older persons grant; disability grant; grant-in-aid; social relief of distress*
 - Beneficiaries increased from 2.5 million in 1998 to 16.1 million in 2013
 - 30% of the population are beneficiaries

Agriculture policy

- **Land Reform programme** – *A programme to rectify colonial/apartheid era inequalities by allocating land to black South Africans*
- **Removal of support mechanisms for agriculture** - *The democratic transition of 1994 involved a shift from food self-sufficiency to exports/imports based on comparative advantage*

Conclusions and implications

- Policy incongruities are often caused by systemic problems rather than a lack of knowledge/information
- Agricultural interventions to improve nutrition are valuable, but we also need a wide-reaching understanding of food systems and governance
- Research should focus explicitly and critically on the actions and roles of governments and policy-makers